

Orange

Recommendations for Maintaining Postharvest Quality



Mary Lu Arpaia and Adel A. Kader

Department of Botany and Plant Sciences, University of California, Riverside

Department of Plant Sciences, University of California, Davis

MATURITY INDICES

Soluble solids/acid ratio of 8 or higher and yellow-orange color at least on 25% of the fruit surface or soluble solids/acid ratio of 10 or higher and green-yellow color on 25% or greater of the fruit surface.

QUALITY INDICES

- Color intensity and uniformity
- Firmness
- Size
- Shape
- Smoothness
- Freedom from decay
- Freedom from defects including physical damage (abrasions and bruising), skin blemishes and discoloration, freezing damage, chilling injury, and insect damage
- Flavor quality is related to soluble solids/acid ratio and absence of off-flavor-causing compounds including fermentative metabolites

OPTIMUM TEMPERATURE

3-8°C (38-46°F) for up to 3 months, depending on cultivar, maturity-ripeness stage at harvest and production area. Some Florida-grown cultivars can be kept at 0-1°C (32-34°F). Arizona-grown Valencia oranges should be kept at 9°C (48°F).

OPTIMUM RELATIVE HUMIDITY

90 to 95%

RATES OF RESPIRATION

Temperature	5°C (41°F)	10°C (50°F)	15°C (59°F)	20°C (68°F)
ml CO ₂ /kg·hr	2-4	3-5	6-12	11-17

To calculate heat production multiply ml CO₂/kg·hr by 440 to get BTU/ton/day or by 122 to get kcal/metric ton/day.

RATES OF ETHYLENE PRODUCTION

<0.1 µl/kg·hr at 20°C (68°F)

Produce Facts



RESPONSES TO ETHYLENE

Exposure to 1-10ppm ethylene for 1-3 days at 20-30°C (68-86°F) may be used for degreening oranges. This treatment does not influence the internal quality (including soluble solids/acid ratio) and may accelerate deterioration and decay incidence.

RESPONSES TO CONTROLLED ATMOSPHERES (CA)

A combination of 5-10% O₂ and 0-5% CO₂ can be useful for delaying senescence and for firmness retention but does not have a significant effect on decay incidence and severity, which is the limiting factor to long-term storage of oranges. Fungistatic levels (10-15%) of CO₂ are not used because they may result in off-flavors due to accumulation of fermentative metabolites. Commercial use of CA on oranges during storage and transport is very limited.

PHYSIOLOGICAL DISORDERS

Chilling injury. Symptoms include pitting, brown staining, and increased decay incidence. Minimum safe temperature depends on cultivar, production area, and maturity-ripeness stage at harvest. Severity of symptoms can be reduced if water loss is minimized (by waxing or film wrapping) and if decay-causing fungi are controlled (by use of fungicides and/or biological antagonists).

Stem-end rind breakdown. Symptoms include shriveling and peel injury around the stem due to aging.

Oil spotting (Oleocellosis). Harvesting and handling turgid oranges can result in release of oil that damages surrounding tissues. Thus, oranges should not be harvested when fully turgid such as early in the morning and soon after rain or irrigation.

Rind staining. This disorder results from overmaturity at harvest. It can be reduced by preharvest application of gibberellic acid that delays senescence.

PATHOLOGICAL DISORDERS

Important Diseases:

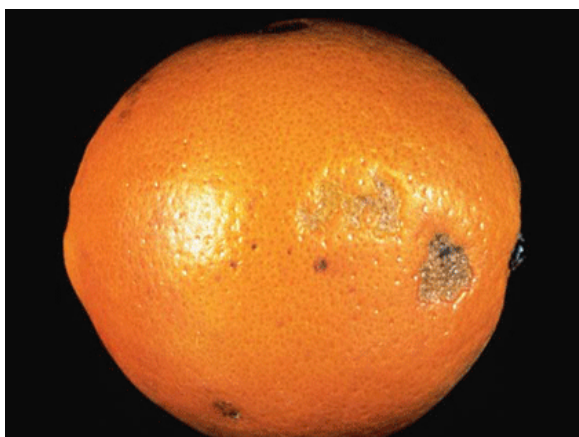
- Green mold (*Penicillium digitatum*)
- Blue mold (*Penicillium italicum*)
- Phomopsis stem-end rot (*Phomopsis citri*)
- Stem end rot (*Lasiodiplodia theobromae*)
- Brown rot (*Phytophthora citrophthora*)
- Sour rot (*Geotrichum candidum*)

CONTROL STRATEGIES

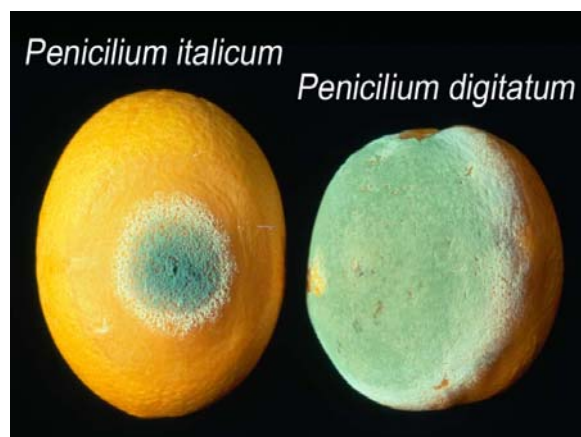
- Minimizing physical damage during harvesting and handling.
- Treatment with postharvest fungicides and/or biological antagonists. Also, heat treatments may be used.
- Prompt cooling and subsequent maintenance of optimum temperature and relative humidity throughout marketing operations.
- Removal and/or exclusion of ethylene.
- Effective sanitation procedures throughout postharvest handling.

POSTHARVEST PHOTO GUIDE

DISORDERS



CHILLING INJURY



GREEN MOLD AND BLUE MOLD



SOUR ROT



PHOMOPSIS STEM-END ROT



It is the policy of the University of California not to engage in discrimination against or harassment of any person, employed by or seeking employment with the University, or in any of its programs or activities, on the basis of race, color, national origin, religion, sex, gender, gender expression, gender identity, pregnancy, physical or mental disability, medical condition (cancer-related or genetic characteristics), genetic information (including family medical history), ancestry, marital status, age, sexual orientation, citizenship, or service in the uniformed services, as well as state military and naval service. This policy is intended to be consistent with the provisions of applicable state and federal laws and University policies. University policy also prohibits retaliation against any employee or person seeking employment for bringing a complaint of discrimination or harassment pursuant to this policy. This policy also prohibits retaliation against a person who assists someone with a complaint of discrimination or harassment, or participants in any manner in an investigation or resolution of a complaint of discrimination or harassment. Retaliation includes threats, intimidation, reprisals, and/or adverse

In addition, it is the policy of the University of California to undertake affirmative action, consistent with its obligations as a Federal Contractor, for minorities and women, for persons with disabilities, and for covered veterans. The University commits itself to apply every good faith effort to achieve prompt and full utilization of minorities and women in all segments of its workforce where deficiencies exist. These efforts conform to all current legal and regulatory requirements, and are consistent with University standards of quality and excellence. In conformance with Federal regulations, written affirmative action plans shall be prepared and maintained by each campus of the University of California, by the Lawrence Berkeley National Laboratory, by the Office of the President, and by the Division of Agriculture and Natural Resources. Such plans shall be reviewed and approved by the Office of the President and the Office of the General Counsel before they are officially promulgated. Inquiries regarding the University's equal employment opportunity policies may be directed to the Affirmative Action Contact, University of California, Agriculture and Natural Resources, 2801 Second Street, Davis, CA 95618 (530) 750-1318.